



The John H Collins Gwent Cross Country League

Chepstow Racecourse, Chepstow, NP16 6EH. Saturday 7th February 2026

Bristol and West AC are delighted to welcome you back to Chepstow Racecourse for the 4th fixture of the 2025/2026 Gwent League season. The racecourse has the advantage of ample free parking directly adjacent to the venue, hot drink facilities, as well as permanent toilets.

Location: The course is less than 10 minutes from junction 2 of the M48. To get there by road the racecourse is situated on the A466 Chepstow to Monmouth Road, not far from the now toll-free Severn Bridge. From the M4 East (Junction 21) or M4 West (Junction 23), take the M48 and exit at Junction 2 (Chepstow). You will see brown racecourse signs ready to follow on your journey. <https://www.chepstow-racecourse.co.uk/raceday-experience/get-here>

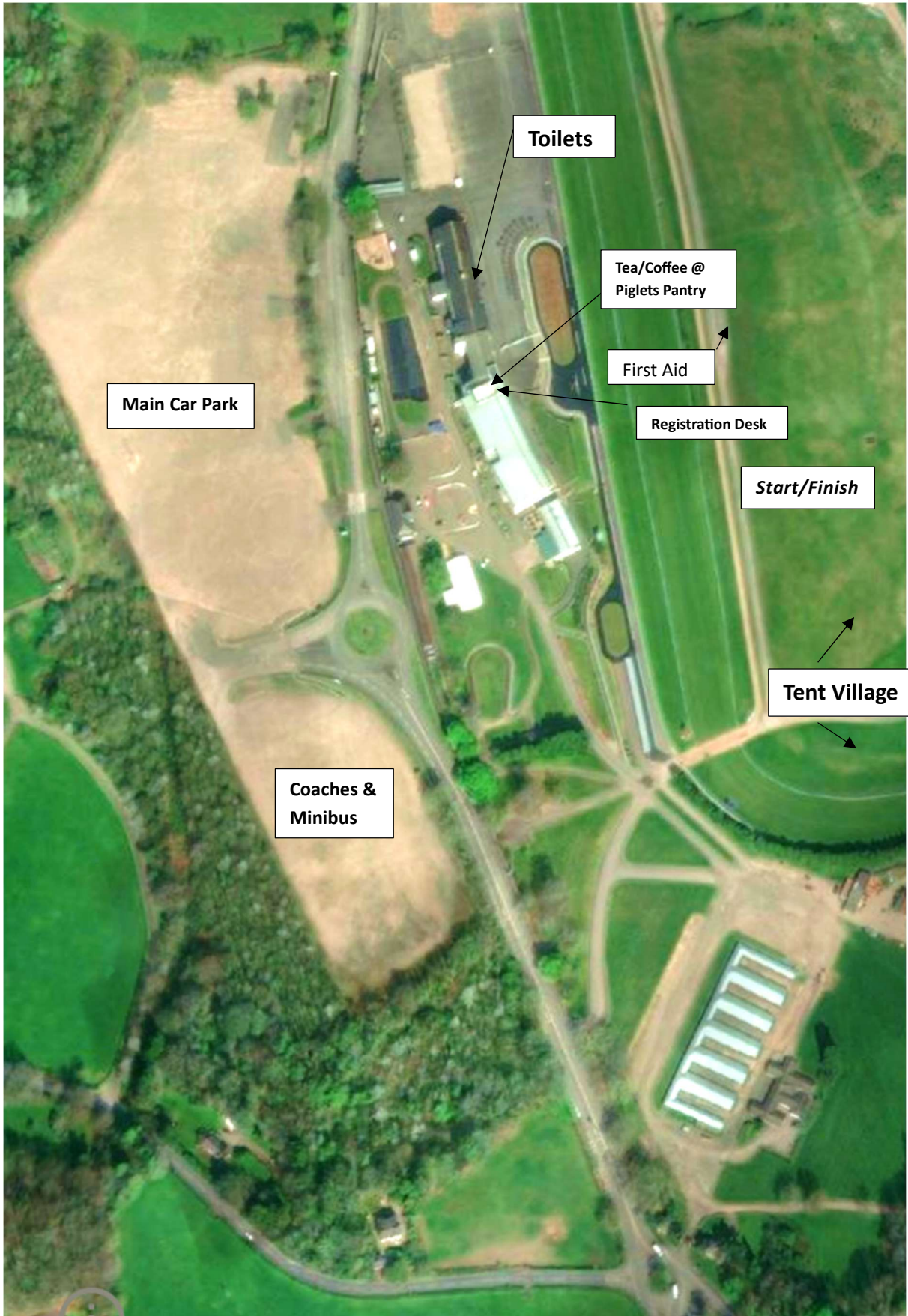
Car & Coach Parking: Turn off the roundabout at the racecourse following the signs for the main carpark. Parking is free, without the need for a ticket. Once parked, walk across the zebra crossing to the racecourse entrance (gate 4). Please arrive early and allow plenty of time to find parking and walk over. Any club travelling by coach or minibus (> 12 seats) please email Matt on bolivariantimes@gmail.com to reserve a space in the main carpark.

Tents: There will be a designated tent "village" to the south of the racecourse (see Map). Tent's will be able to be dropped off via gate 2. Once dropped off please ensure your car is then moved to the main carpark (gate 3). Please pitch tents considerately and in the presence of high winds that risk tents being blown down please contact the race directors.

Other Facilities: Permanent toilets will be available either side of the Grandstand, see the below map. Tea and Coffee will be available at the popular café "Piglet's Pantry" located in the Premier Foyer. Registration and Gwent league t-shirt winners will also be able to collect them from just inside the Premier Foyer. We have been asked to ensure that no muddy footwear is worn inside the foyer so please remove prior to entering. There are no showers or changing rooms available so please arrive already changed. Any lost children should also be taken to the officials situated inside the foyer; they will then contact the race directors.

Health and Safety: First aid will be provided by Life Support Training and Safety. Event medical cover will include a 4x4 ambulance.

Course: A separate document is available detailing various race routes and distances. All races will take place inside the horse racetrack. The "track" is seen as sacred ground and under NO CIRCUMSTANCES should any runners or spectators use the oval racecourse in between the white PVC fencing. Anyone found to be pitching a tent or warming up on the racecourse itself may be asked to leave the premises. Dogs are allowed onsite but MUST be kept on lead at all times, we have been asked that all dog mess is taken away. Please DO NOT deposit dog mess in any onsite bins.



Main Car Park

Toilets

Tea/Coffee @
Piglets Pantry

First Aid

Registration Desk

Start/Finish

Tent Village

Coaches &
Minibus